



COSTAIN

Overview of SWIC (South Wales Industrial Cluster)

Grant Spence: Project Director – Decarbonisation

03rd June 2021

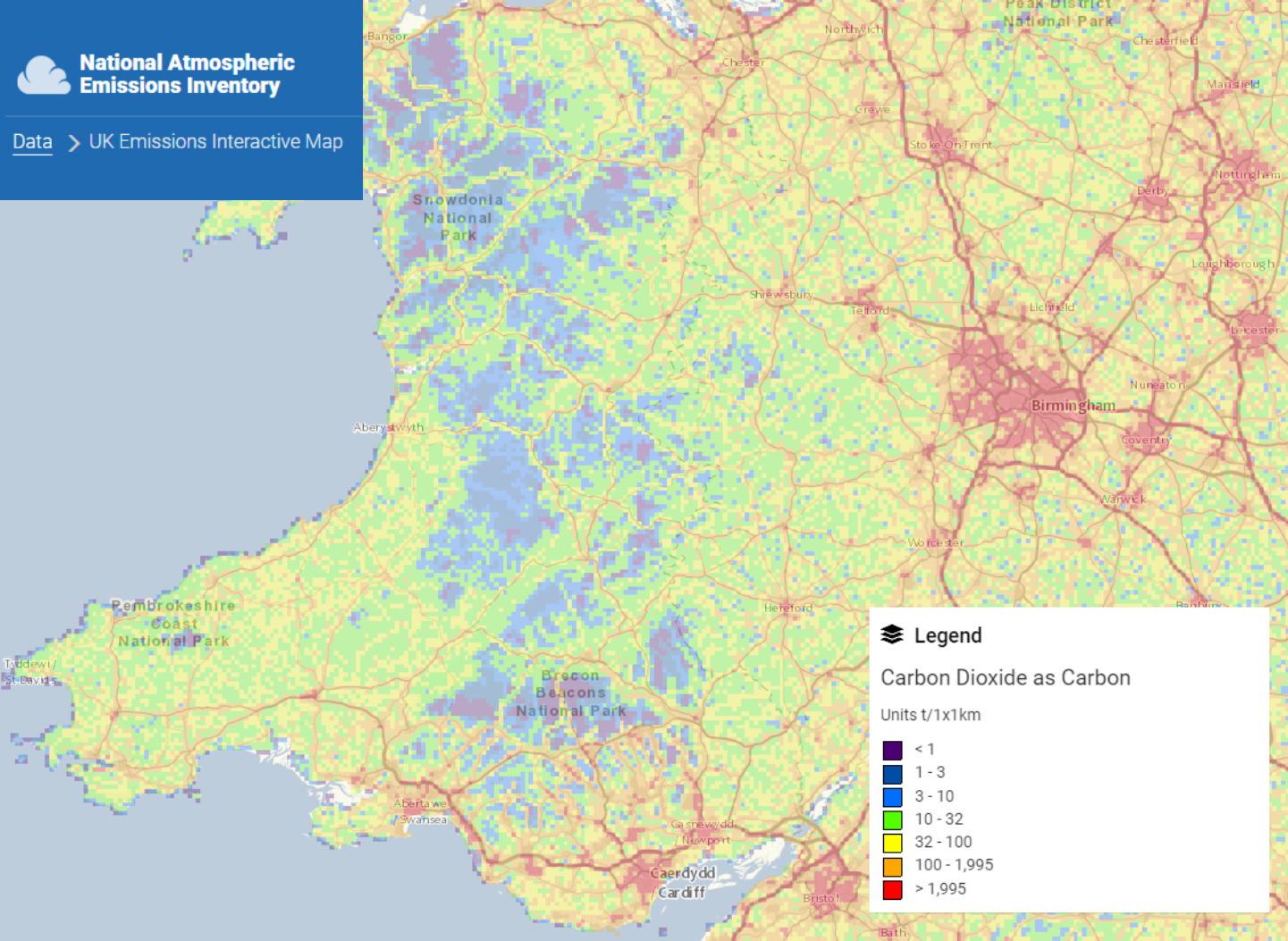
Improving people's lives.



South Wales Industrial Cluster

c. 90% of Welsh recorded NAEI GHG emissions are in South Wales

Over 75% of South Wales NAEI emissions are by SWIC partner companies



Legend

Carbon Dioxide as Carbon

Units t/1x1km

Dark Purple	< 1
Blue	1 - 3
Light Blue	3 - 10
Green	10 - 32
Yellow	32 - 100
Orange	100 - 1,995
Red	> 1,995



South Wales Industrial Cluster

An integrated decarbonisation infrastructure solution



ISCF IDC DEPLOYMENT: PHASE 2



This map does not represent any specific plans or strategies relating to sites depicted.

South Wales Industrial Cluster



SWIC Deployment Phase 2: Mar 2021 to Mar 2024

- Emissions reduction programme design (Feasibility & FEED studies);
- Review optimal decarbonisation solutions for industry: including CO₂ capture, electrification & fuel switching (e.g. with H₂)...;
- ...In parallel with consideration of existing and future infrastructure opportunities and constraints.



Overall ambition: Transforming Welsh industry to Net Zero by 2040

- Decarbonising c. 16 Million Metric Tonnes Equivalent CO₂/ year;
- Preserving and securing > 113,000 Wales based industry & manufacturing jobs;
- Creating c. 5,000 new, skilled jobs developing, enabling and operating new clean energy infrastructure;
- Enabling projections of £2 – 4 Bn/y inward investment across Wales to achieve Net Zero by 2050;
- Prosperous clean growth for future generations in Wales;
- Anchoring foundation and emerging industry to Wales:
 - Economic prosperity;
 - Diverse, well paid, skilled jobs opportunities targeting deprived areas; and
 - Build localised supply.





Thank You!

**Grant Spence
Project Director: Decarbonisation**

E: grant.spence@costain.com

T: +44 (0) 7570 950 828

W: www.costain.com